

# **TWO PROPOSED LANDSCAPE MEMORIAL AREAS IN MORAVIAN CARPATHIANS BASED ON MOUNTAINOUS AGRICULTURE AND SPIRITUAL VALUES**

**Kyselka Igor**

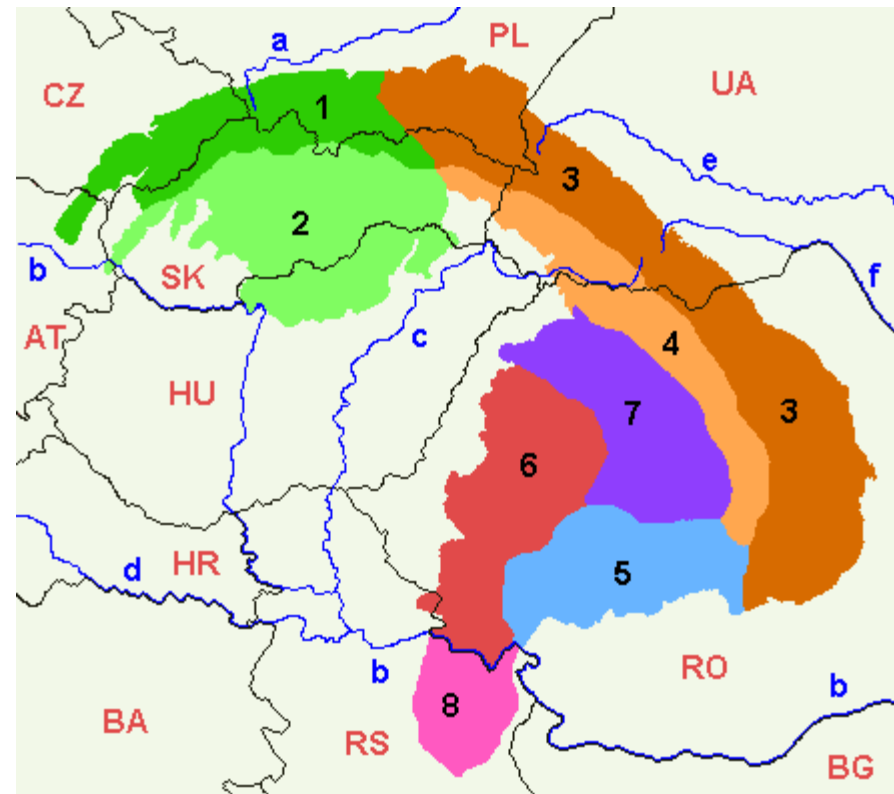
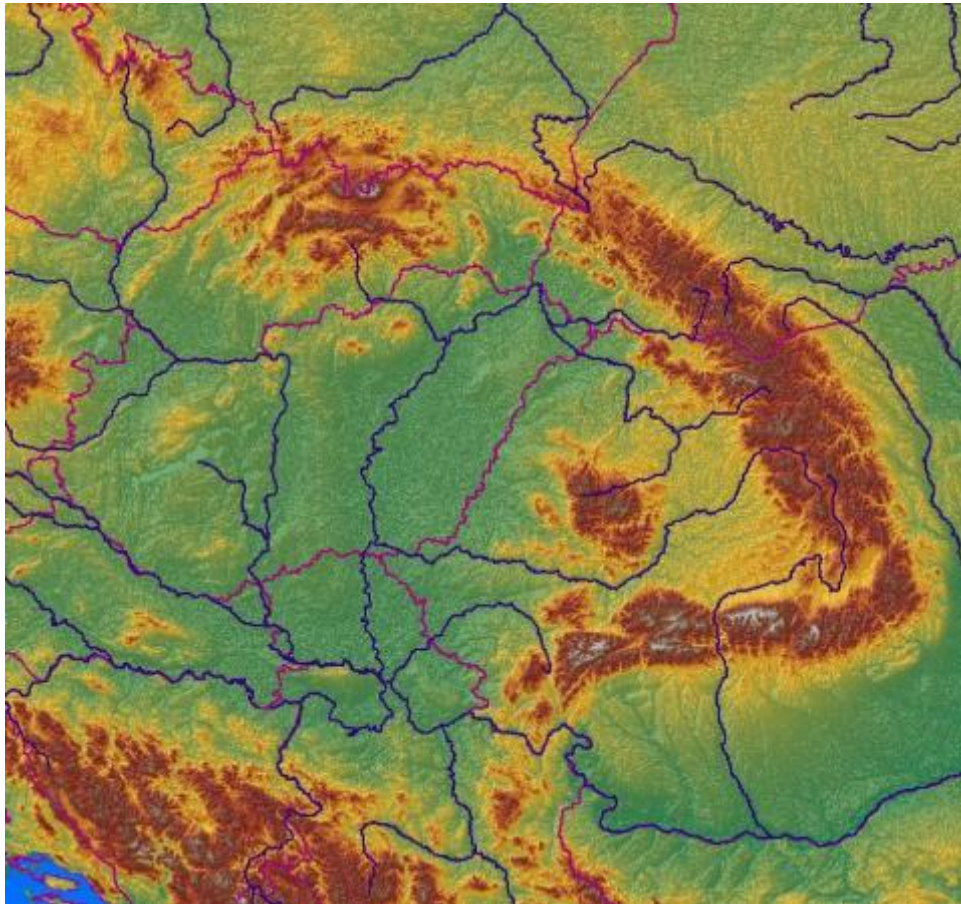
**Methodical centre for garden culture of National heritage institute  
Kroměříž**

**13th Network conference Spa-ce.net**

**Management of historically developed urban and rural landscapes in Central and  
South Eastern Europe**

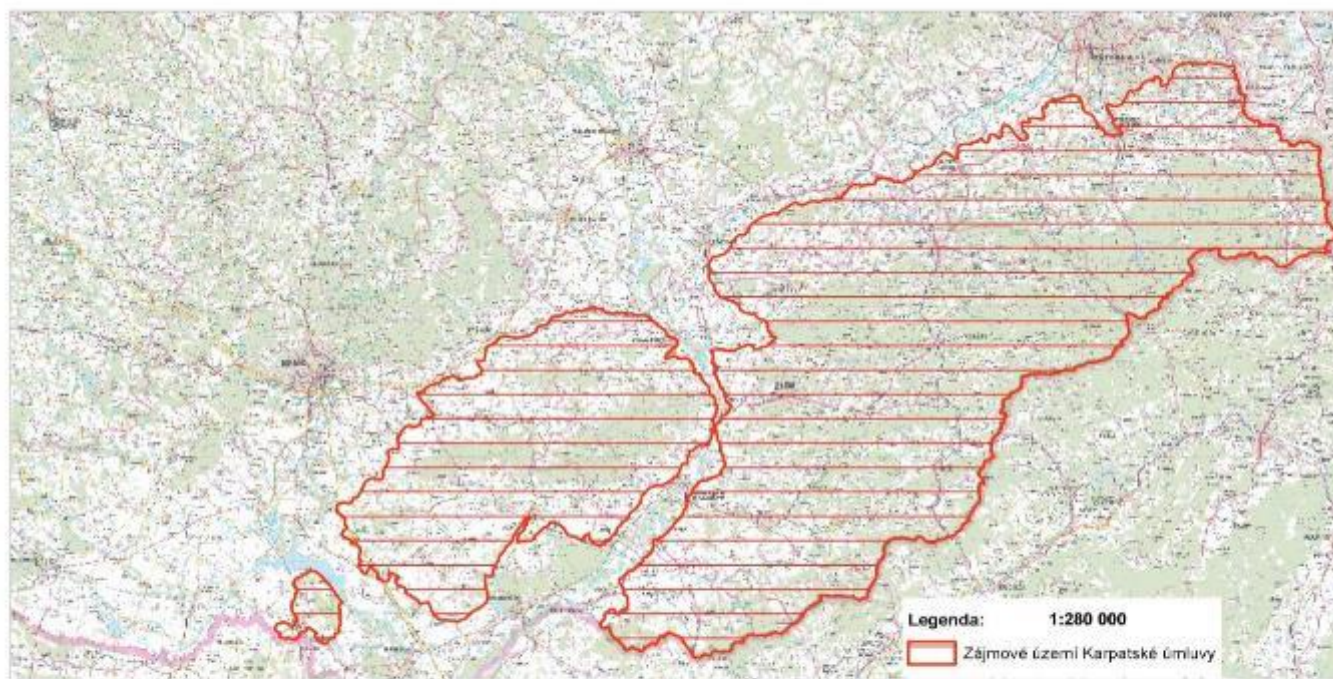
**Lednice, 12th -14th of September 2016**

# Carpathians - Europe's largest mountain system extending into seven states



# OUTER WESTERN CARPATHIANS IN CZECH REPUBLIC covers 7180 km<sup>2</sup>, ie 9.1% of its territory, of which one third consists of SPAs

ÚMLUVA O OCHRANĚ A UDRŽITELNÉM ROZVOJI KARPAT



12th – 14th of September  
2016

methodical centre for garden culture of  
National heritage institute Kroměříž



# VALUES OF CARPATHIANS - scattered settlements



12th – 14th of September  
2016

Methodical centre for garden culture  
National heritage institute Kroměříž



# VALUES OF CARPATHIANS - VARIED BIOTOPES



12th – 14th of September  
2016

Methodical centre for garden culture of  
National heritage institute Kroměříž



# VALUES OF CARPATHIANS – LIVING FOKLORE



12th – 14th of September  
2016

Methodical centre  
National heritage institute Kroměříž



# VALUES OF CARPATHIANS – RICH FAUNA AND FLORA



12th – 14th of September  
2016

Methodical ce  
National heritage institute Kroměříž

# LANDSCAPE MEMORIAL AREAS IN CZECH REPUBLIC

- Are declared in the Czech Republic since the beginning of 1990ies to protect outstanding examples of historical landscapes formed by man activities and preserved till the present.
- On the whole 74 areas were proposed to protect, but only 23 ones were officially declared as Landscape Memorial Zones up to now, no one in Carpathians yet.
- Most of them protect well-preserved landscape compositions around feudal residences with alleys, courts, mansions, English gardens with artificial water bodies and other artefacts purposefully placed in the landscape.
- According to the demands of the European Landscape Convention, new Landscape Memorial Zones should be declared to protect more varied types of cultural historical landscapes; not only planned landscape compositions, but also organically developed types of agricultural and old industrial landscapes.
- It is necessary to develop methodical principles how to protect and care for historical landscapes and apply them in the practice, as well.



# The European Landscape Convention among others, highlighted

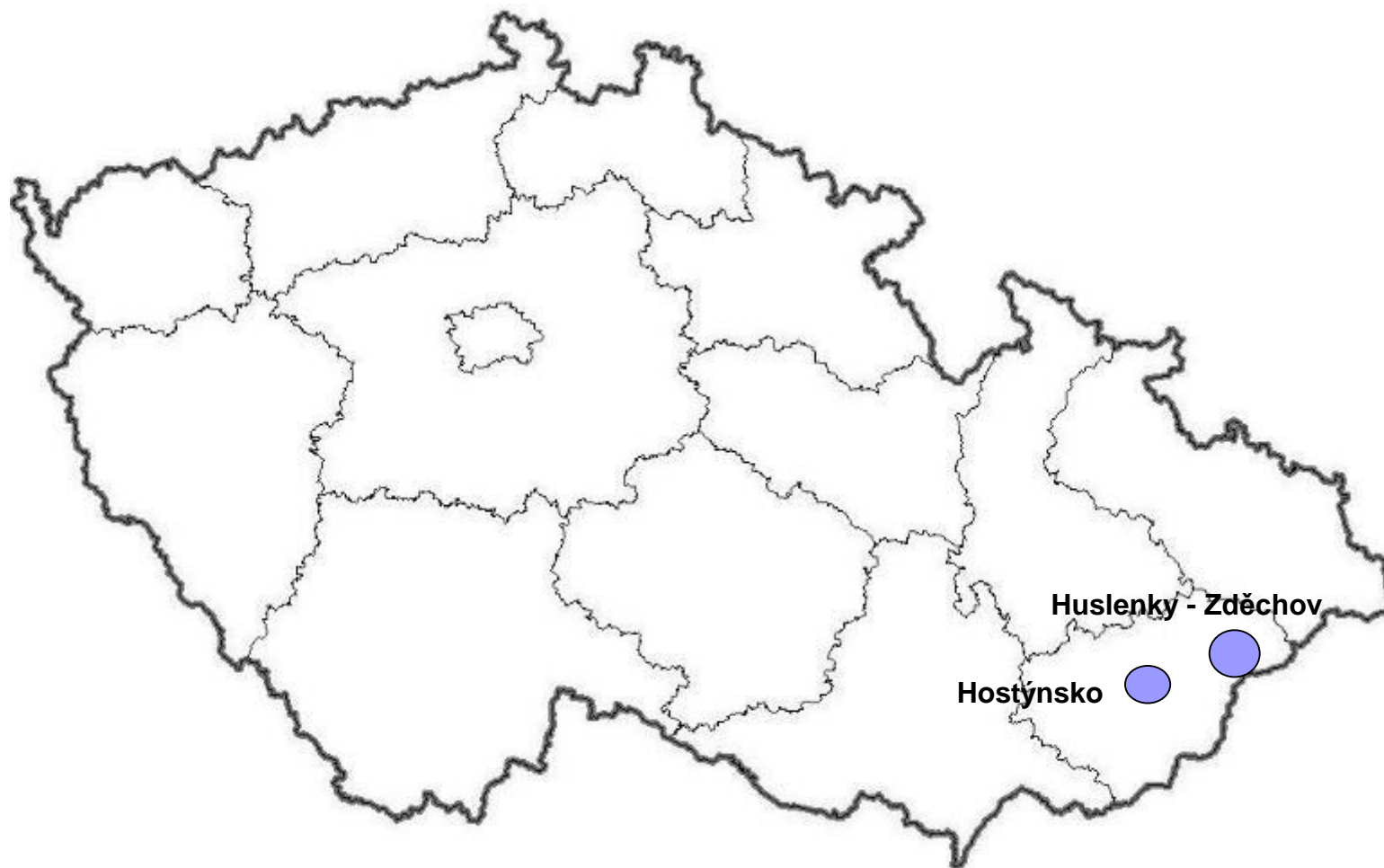
**"Cultural landscape is understood as a natural and cultural heritage and care for it to be based on continuity human activity, to which the cultural landscape historically dependent "  
(Council of Europe, 2000)**



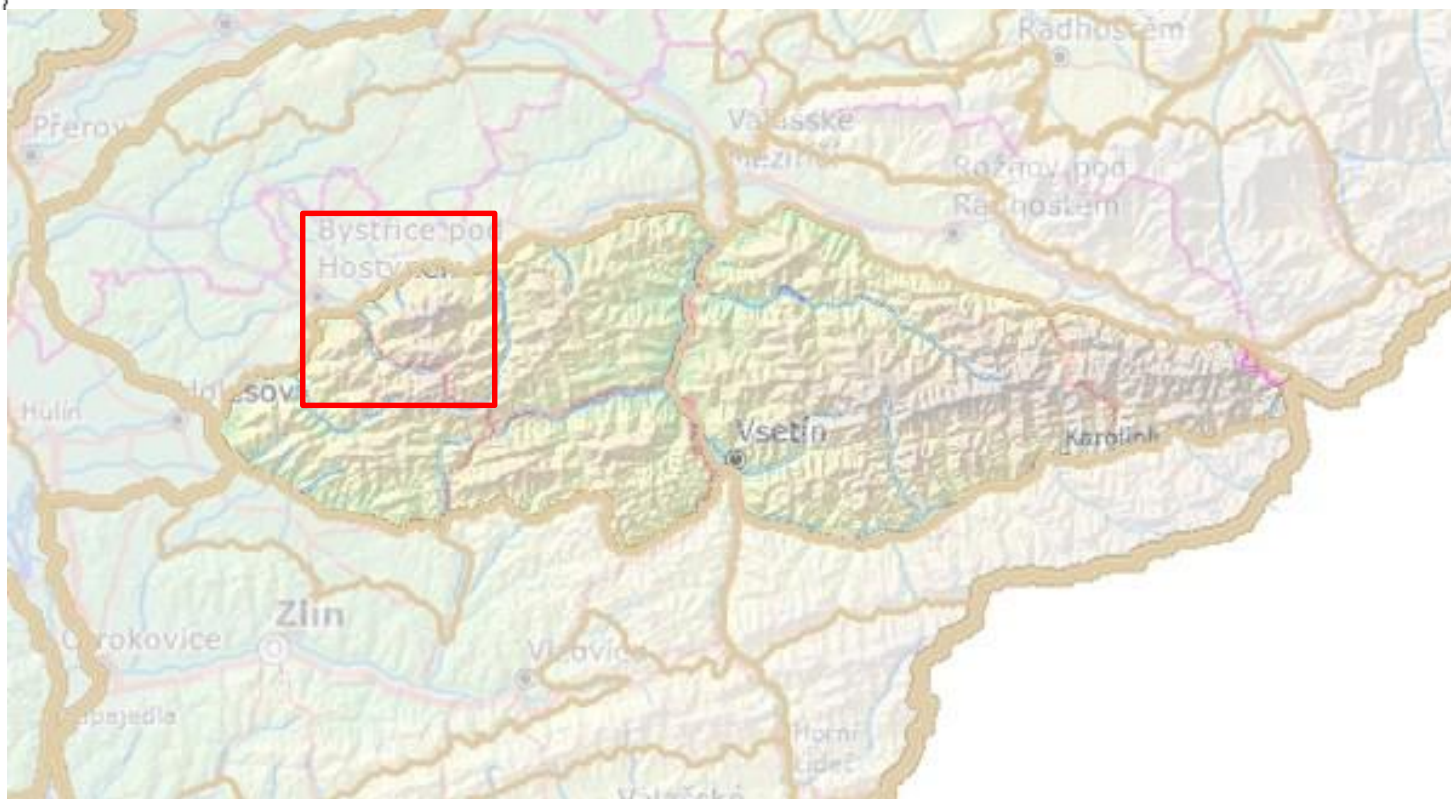




# INVESTIGATED AREAS- LOCALIZATION IN CZECH REPUBLIC



## DETAIL OF INVESTIGATED AREA – HOSTÝNSKO – Hostýn mountain and surroundings



12th – 14th of September  
2016

Methodical centre for garden culture of  
National heritage institute Kroměříž



# CHARACTERISTICS OF THE AREA

- Distinctive transition from plains to the hills
- The old pagan cult place
- Crossroads of old trade routes
- Silver mines in the Middle Ages
- Miraculous victory over the Tatars in 1241
- One of the most important Marian pilgrimage sites in Moravia - basilica minor



# CHARACTERISTICS OF THE AREA

- Obřany – highest located castle ruin above sea in Moravia (704 m a.s.)





# CHARACTERISTICS OF THE AREA

- Art Nouveau Calvary according Dusan Jurkovic



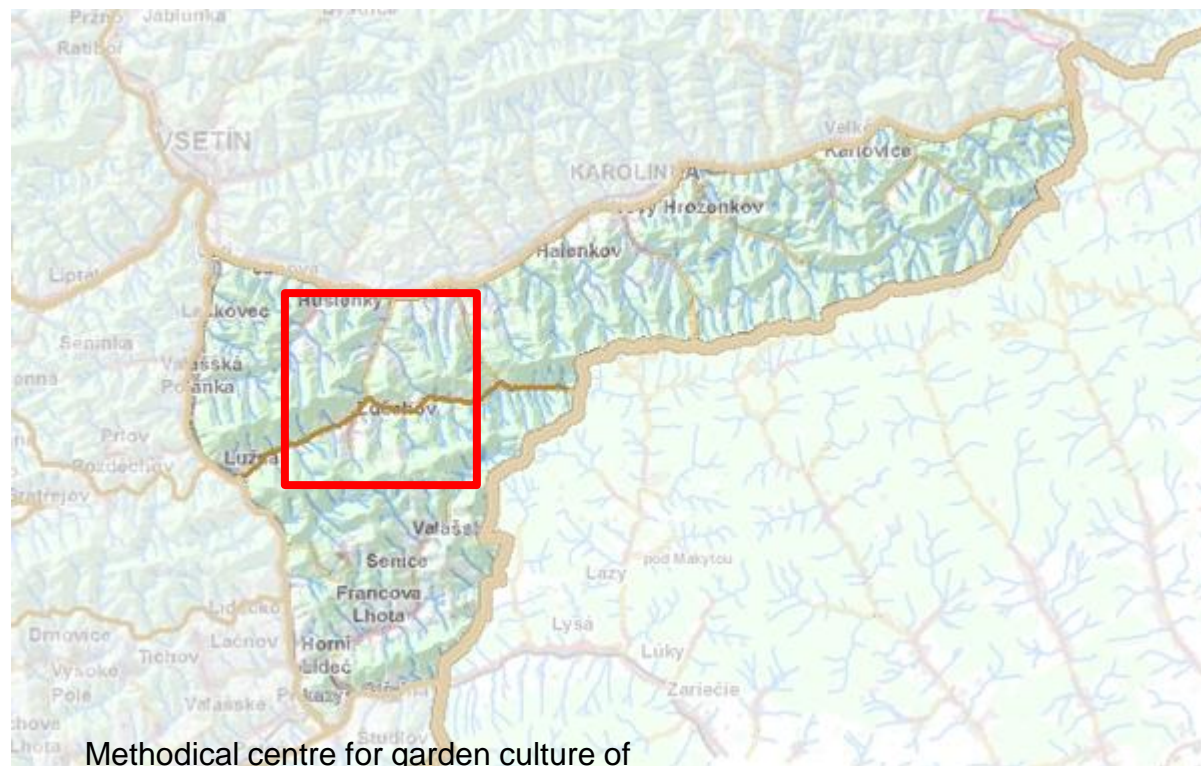
# CHARACTERISTICS OF THE AREA

- Preserved beech forests - the source of bentwood furniture – production of local famous company Thonet





## DETAIL OF INVESTIGATED AREA – Huslenky - Zděchov



12th – 14th of September  
2016

Methodical centre for garden culture of  
National heritage institute Kroměříž

# CHARACTERISTICS OF THE AREA

- Mountainous area with an altitude of 390-900 m
- Late colonization until the 16th century
- Landscape character - mountain meadows with individual homesteads,
- small orchards and rustic woods





# CHARACTERISTICS OF THE AREA

- Wallachian settlements - mountain goats and sheep
- Picturesque scenery
- partially preserved traditional economy
- Typical clusters of houses in the valleys and on the slopes



# Thanks for your attention!



12th – 14th of September  
2016

Methodical centre for garden culture of  
National heritage institute Kroměříž